



EnerBurn® Success Story: **Tow Boat EMD 645E7 Test©**

Introduction: *The use of Enerburn® fuel combustion catalyst reduced diesel fuel consumption by 13% - 5% (+/- 0.5%) over a range of engine speeds. This result was measured by the client.*

Background: Summary of Engine and Testing Details.

Marine Engine Manufacturer & HP	EMD (General Motors) 645E7, 12-cyl, 2,305 hp engine (2)
Tow Boat Company:	Confidential
Engine Test Conditions:	Variable RPM, normalized by engine horsepower
Test Period:	2009
Test Engineering Company	Client did its own testing
Client Company Testimonial (Y/N)?	Yes – client since 2010

Results & Conclusions: Summary of Baseline versus new Benchmark Brake Specific Fuel Consumption (lbs/hp-hr) using diesel treated with Enerburn®.

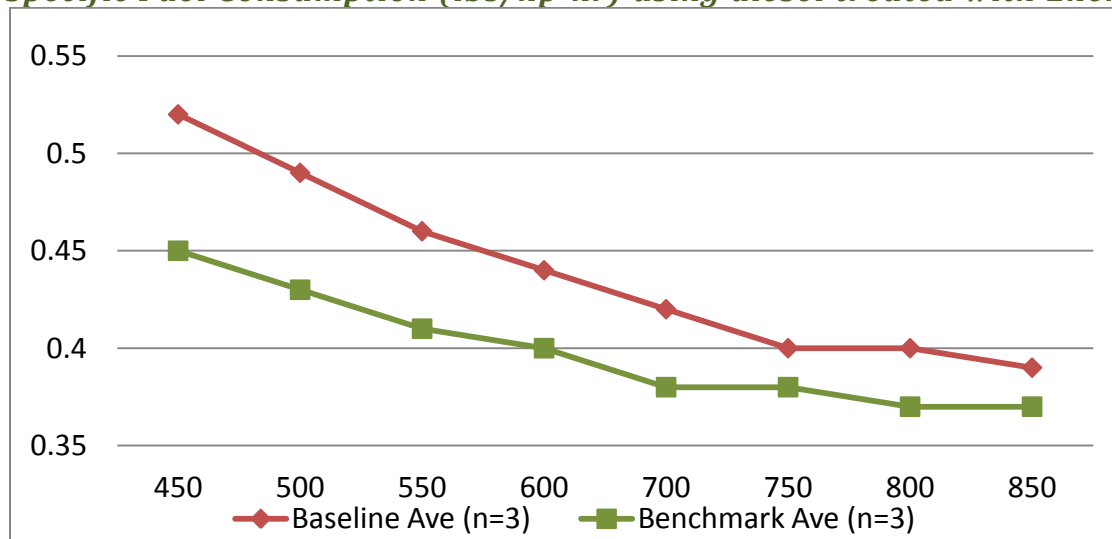


Figure 1: Brake-Specific Fuel Consumption vs RPM settings with and without EnerBurn®.

Table 1: Percent Improvement in BSFC with EnerBurn®.

RPM	450	500	550	600	700	750	800	850
Baseline Ave (n=3)	0.52	0.49	0.46	0.44	0.42	0.40	0.40	0.39
Benchmark Ave (n=3)	0.45	0.43	0.41	0.40	0.38	0.38	0.37	0.37
% Improvement	13.5%	12.2%	10.9%	9.1%	9.5%	5.0%	7.5%	5.1%

The information herein is the property of JKG Fuel Solutions and is not to be used or reproduced without permission.

Contact Information:

Jane Gates

(612) 209-3079

jgates@betterdiesel.com

